

Macclesfield Primary School

Responsibility • Safety • Respect • Success • Caring

Principal: Lynne Noll



Government of South Australia
Department for Education

Luck St
MACCLESFIELD SA 5153

PHONE: 08 83889338

MOBILE: 0427 270 986

Term 3 Week 5 Friday 21st August

Week 6 – Love and being loved

Monday 24/8/20

Tuesday 25/8/20

Kerry in

Dance lessons continue

Wednesday 26/8/20

Thursday 27/8/20

Kerry in

Friday 28/8/20

Assembly 3/4/5 hosting

Week 7 – Gratitude

Monday 31/8/20

Tuesday 1/9/20

Kerry in

Dance Sessions continue

Wednesday 2/9/20

External School Review

Thursday 3/9/20

Kerry in

Friday 4/9/20

Newsletter day

NED Show

NEWSLETTER NO. 13

Welcome Back to Maccy

We welcome a new student back to the Year 3/4/5 class and hope she enjoys being a part of Macclesfield Primary School again.

Snake at School



On Tuesday, students found the snake (pictured above) resting between the rocks near the basketball court. The students showed exemplary responsibility in dealing with the snake, getting a teacher to address the issue. The snake was removed by the snake catcher.

It serves as a timely reminder that snakes are around, even in these cooler months.

We have had a school assembly to discuss the incident and to remind students of appropriate action to take. We would appreciate it if you could follow this up with your children, also.

Email: Lynne.Noll92@schools.sa.edu.au
www.maccyps.sa.edu.au

STEM (Science, Technology, Engineering, Maths) VITAL TO AUSTRALIA'S FUTURE, BUT TEACHERS NEED 21st CENTURY SKILLS TO ENGAGE STUDENTS

"Core content knowledge" is a 21st century competency—one that out-of-field teachers almost certainly don't have. Out-of-field and novice teachers, especially those teaching two or more integrated STEM subjects, may not have sufficient knowledge to teach either subject, let alone the capacity to integrate them.

"Because 21st century competence includes discipline knowledge, out-of-field teachers cannot have 21st century competence in its entirety. Nor can they be expected to integrate mathematics with other subjects. Integrated STEM is not a substitute for discipline specific knowledge but rather is founded upon it."

Beswick and Fraser have developed a six-step process, the STEMCrAFT framework, that can prompt STEM teachers to reflect on their own 21st century competencies and identify areas for improvement.

The researchers believe that the STEMCrAFT framework will help reveal which skills or competencies teachers need to work on. In the long run, this could lead to a higher standard of STEM teaching and, hopefully, more student interest.

The STEMCrAFT framework is to be used in the selection of STEM resources for teaching. Steps include preparation, planning, context, resource usability, support considerations, and evaluating the implementation. Each is accompanied by a series of questions to guide teachers to reflect on their 21st century competencies.

"STEM disciplines, including mathematics, provide ideal sites in which to develop students' 21st century competence but, just as teachers of mathematics need deep and extensive knowledge of that discipline, teachers of 21st century skills need those skills to a high degree."

"STEMCrAFT draws attention to the importance of these competencies, and, most importantly, raises the awareness of novice or out-of-field teachers of what they need to learn. Ideally with the support of school leadership, it can provide direction and impetus for their professional development."

The process doesn't just highlight how important these competencies are, it actually requires that teachers use them in answering questions.

...to be continued

Character Strength Gratitude/Appreciation

The strength of gratitude means you are aware of, and thankful for, the good things that happen to you in life. You do not take anything for granted and always take time to express your thanks. Gratitude is both an emotion (a sense of thankfulness and appreciation) but also more generally for good acts and good people.

If you have the strength of gratitude...

- You always say thankyou, even for little things
- If you had to list everything you felt grateful for, it would be a very long list
- You are grateful to a wide variety of people and demonstrate your appreciation
- As you get older, you find yourself more able to appreciate the people, events and situations that have been part of your life history.

Out of School Hours Care

Please remember that the school offers care for students before and after school, through Happy Haven. It is important that we make use of the service if we wish to maintain its availability, since they can only provide the service if it is viable to them also.

To access the service and make a booking, please ring the school number 83889338 and you will be directed to choose a numbered option.

Year 1 Screening

Each year we are required to test our Year 1s Phonics skills in a test, designed by the department. This test is used to confirm teacher judgement about the progress of students and to analyse their skills (and sometimes, misconceptions, about how language works. The data is all sent to the Dept. for central collection.

Our Year 1s were tested this week.

Progressive Achievement Tests (PAT tests)

Similarly, all South Australian primary schools test students from Year 3-7 in the PAT reading and Maths tests.

We have also elected to test our younger students (Years 1 and 2), since this provides us with valuable data.

Students will also complete a PAT Science test. This information will also help us plan for students accurately and give us a measure of both achievement and growth.

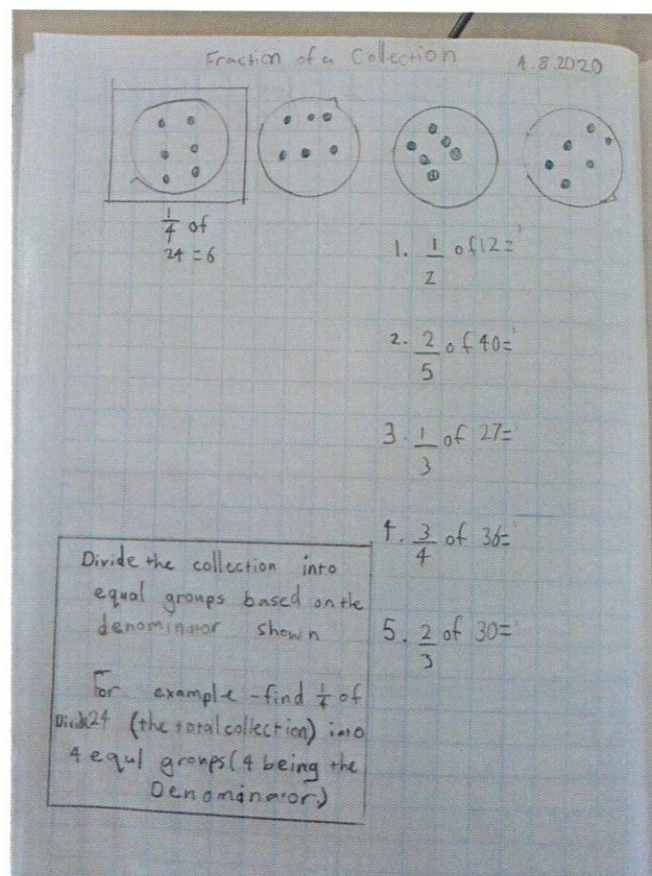
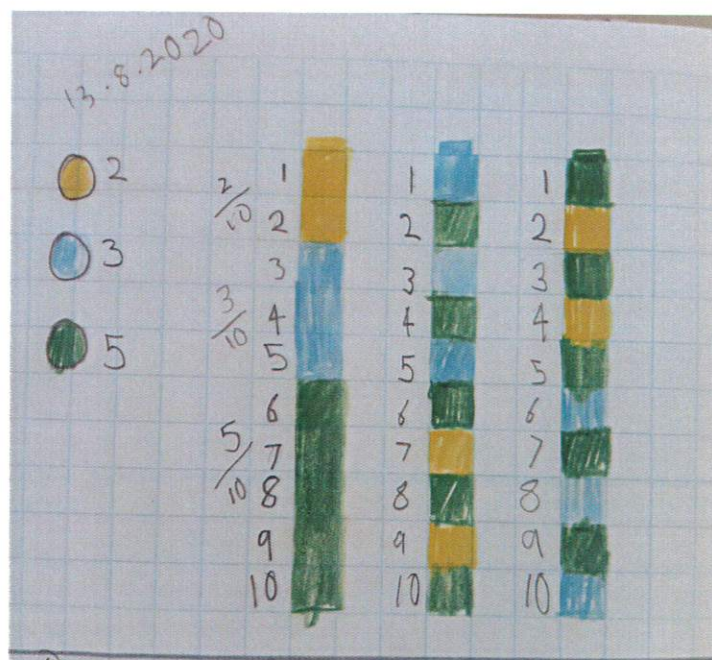
Year 3, 4 & 5's

In maths we have been focussing on fractions, leading into decimals and percentages for the year 4 and 5's.

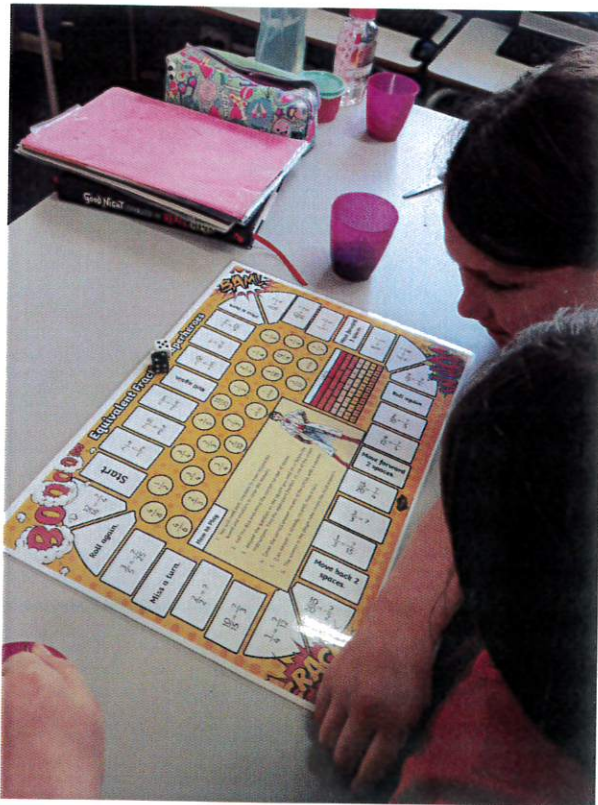
Mrs Spencer has been helping us to understand why productive struggle in maths is a good thing. In her training from the student free day at Echunga she learnt it's okay to be uncomfortable in maths sometimes and for our brain to hurt a bit, because that is when the learning happens, creating new neural pathways. If maths is always easy our brains are not making new connections.

It is uncomfortable to be in the Learning Pit in maths and having to explain our strategies about our thinking or processes, but with practise it will get easier. Mrs Spencer is getting us to reframe our language about maths from - this is too hard, I can't do it, to; I can't do it YET or if I keep trying and ask for help I will be able to succeed.

The photos show some of our learning on fractions, our bookwork, maths investigations from Tierney Kennedy - Back-to-Front Maths, playing board games and groups of children working quietly so Mrs Spencer can work with small groups.







Fraction of a collection
Divide the collection into equal groups based on the denominator shown.

For example - find $\frac{1}{4}$ of 24. Divide 24 into 4 equal groups (4 being the denominator)

$\frac{1}{4}$ of 24 = 6

1. $\frac{1}{2}$ of 12 = 6 ✓

2. $\frac{2}{5}$ of 40 = 16 ✓

3. $\frac{1}{3}$ of 27 = 9 ✓

4. $\frac{3}{4}$ of 36 = 27 ✓

5. $\frac{2}{3}$ of 30 = 20 ✓

4/6

What different ways can I write tenths?

In this activity you will learn more about special fractions. In the last activity you learned about tenths. In this activity, you need to write tenths in fraction format and in decimal format. Look at the following and see if you can find the patterns.

Words	Picture	Fraction format	Decimal
Two tenths		$\frac{2}{10}$	0.2

To help you find the patterns:

1. Draw a circle around the 'two' part in each. How did you know?
2. On your calculator, see if you can work out which operation goes on the line below so that you get 0.2 as your answer.
 $2 \div 10 = 0.2$
3. Draw an arrow to the 'tenths' part, or write an explanation of which part represents tenths in the space beneath each representation in the table. How did you know?
4. Try filling in the blanks in the table below:

Words	Picture	Fraction format	Decimal format
Seven tenths		$\frac{7}{10}$	0.7

How did you work out your answers? What patterns did you find? 7 is in all

BACKWARDS QUESTION:
What would your answers be for 12 tenths? 23 tenths?
1.2 or $\frac{12}{10}$ 2.3 or $\frac{23}{10}$

Fraction of a collection
Divide the collection into equal groups based on the denominator shown. For example - find $\frac{1}{4}$ of 24. Divide 24 into 4 equal groups (4 being the denominator)

$\frac{1}{4}$ of 24 = 6

$\frac{1}{2}$ of 12 = 6

$\frac{2}{5}$ of 40 = 16

$\frac{1}{3}$ of 27 = 9

$\frac{3}{4}$ of 36 = 27

$\frac{2}{3}$ of 30 = 20

Road improvement works

Long Valley Road, Wistow to Strathalbyn

Dear Resident/Business Owner,

The Department for Infrastructure and Transport (the Department) will improve safety for all road users on Long Valley Road, between Wistow and Strathalbyn by undertaking shoulder sealing, road widening in key areas, safety barrier installation, upgraded signage, and removal of vegetation to improve visibility.

Works on the \$6 million project, jointly funded by the Australian and South Australian Government's Targeted Road Safety Works Program, are scheduled to commence Wednesday 19 August 2020, and are expected to be completed by the end of November 2020, weather permitting.

The works will be undertaken during the day, Monday to Friday, between 7am and 5pm, with some weekend works as required.

The road will remain open to traffic, with a 25km/h speed restriction in place while workers are on site. Lane and other speed restrictions may apply, subject to onsite conditions, and the Department will ensure that access to properties is maintained.

Please plan ahead, allow extra travel time and take extra care when workers are on site. Observe speed limits, lane restrictions and traffic controllers when travelling through the area.

If you have any questions or would like to speak to a member of the project team, please call 1300 794 880 or email: dpti.communityrelations@sa.gov.au

The Department appreciates your cooperation and patience while these important works are undertaken.

Yours sincerely,

Community and Stakeholder Engagement Team

#15805862

dit.sa.gov.au

Follow us on:    



Australian Government

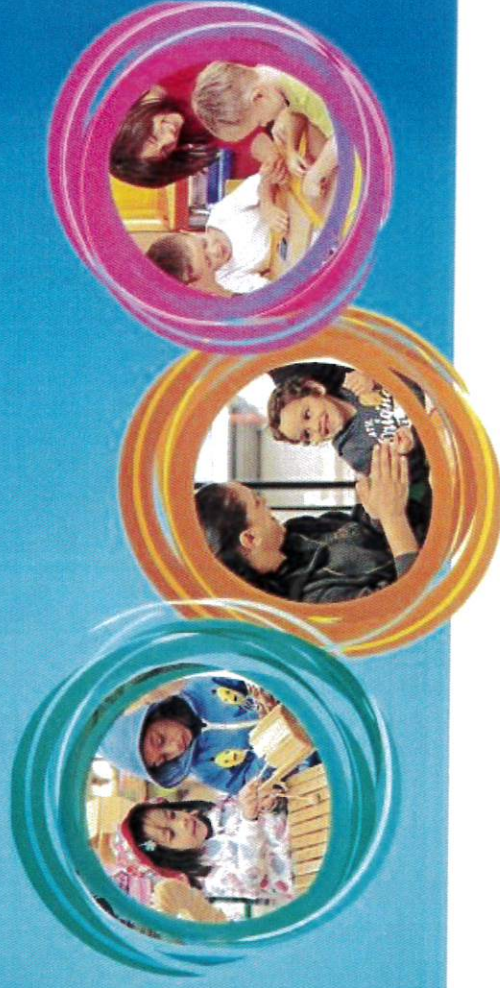
BUILDING OUR FUTURE



Government
of South Australia

Department for Infrastructure
and Transport

ENROL NOW IN PRESCHOOL



Going to preschool helps your child to learn new things,
make friends and develop confidence.

Children who turn 4 before 1 May can start preschool at the beginning
of the year before they start school.



CONTACT US

☎ 08 83885005

✉ dl.4678.leaders@schools.sa.edu.au

🌐 <http://www.meadowskgn.sa.edu.au>



Government of South Australia
Department for Education and
Child Development

Gratitude (appreciation)

